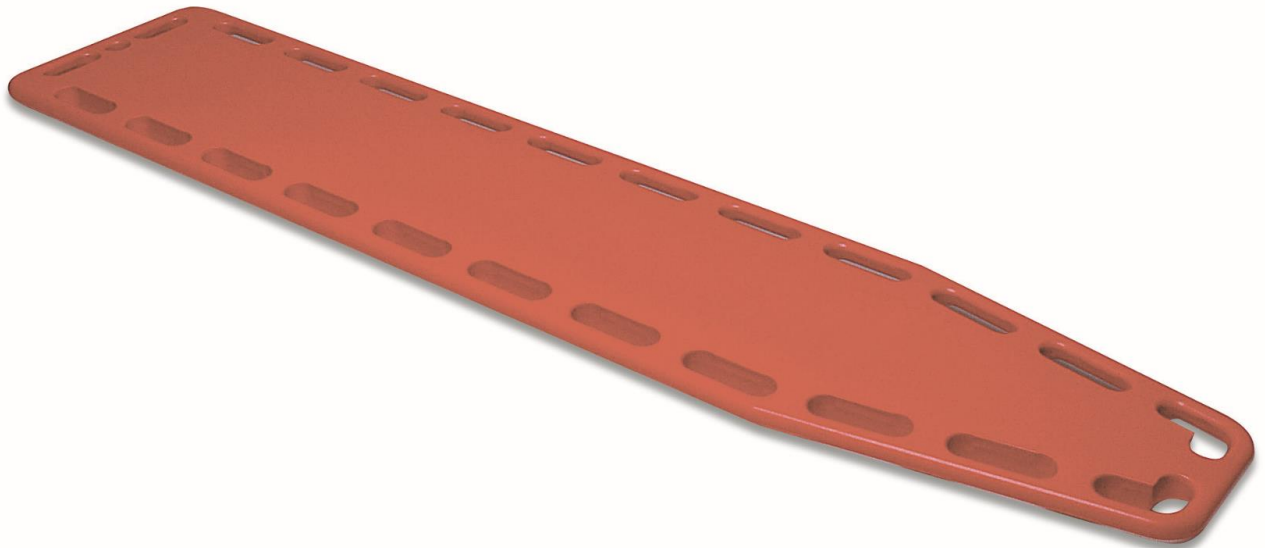


Spinal Board



Polythene spinal board certified according to EN 1865. Compatible with all head immobilization device and strapping system. Suitable for transport with basket board. Standard colour: orange. Bouyant, X-ray translucent.

Board Features:

- Standard Color: Orange
- Floating
- 100% radiolucent
- Dimensions: cm 184x 44x 6,5
- Weight: kg. 7,8
- Load: kf. 150



Accessories on request:

- Head immobilizer FER001
- Strapping system CIN002
- Set 3 strapping system ACC235



Cod. Spinal Board: 50.0301.003